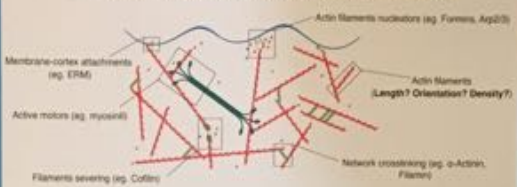


# actomyosin cortex in isolated blebs

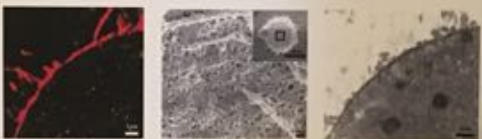
Medalia<sup>2</sup> and Ewa K. Paluch<sup>1</sup>



## 2. Cortex architecture: what we know so far

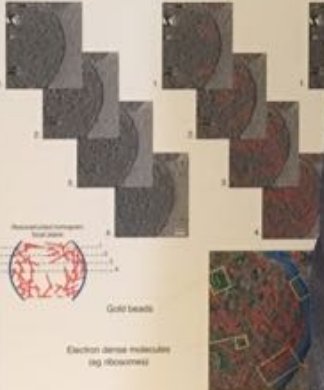


### How filaments are organized in the cortex?



- STORM/Super-res**
  - Not enough resolution
- SEM**
  - Not quantitative
  - Only external surface
- TEM**
  - Not quantitative
  - Cortex too dense

## 4. Reconstruction of cortex tomography



### Geometrical description of actomyosin cortex

#### Cortex-membrane attachment

